



The Industry's Longest-lasting Expendables

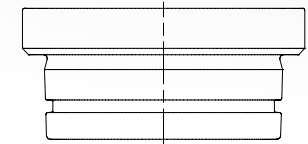
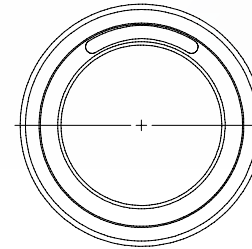
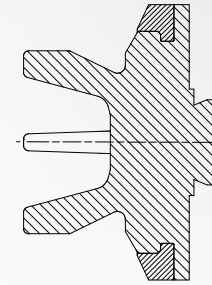
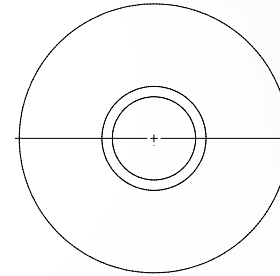
Gardner Denver has what you need, when you need it. Machined in-house from domestically sourced steel, Gardner Denver's OEM valves and seats feature a one-piece design, proprietary bonded inserts and innovative geometry, all of which come together to deliver significantly longer life. In fact, we have outlasted our competitors in every single test—39 percent longer, just on average. We didn't stop there. To reduce downtime even further, we've even color-coded our box labels and valve inserts to eliminate mix-ups on the worksite. We have a vast and immediately accessible inventory and can accommodate almost any frac and well servicing pump.

Gardner
Denver

Pumping Perfected.™



SPECIFICATIONS



Valves and Seats FEATURES & BENEFITS

- Large and immediate supply of OEM products
- Stocking parts close to customers with service centers in Altoona, Cheyenne, San Antonio, Odessa, Oklahoma City, Forth Worth and Shreveport
- Available to fit almost any frac and well servicing pump
- Machined in-house, from premium grade, domestically sourced steel
- One-piece design with a proprietary long lasting insert
- Color-coded to identify size and required tool
- Based on field tests, 39 percent longer life than competitor products, and competitively priced
- Bonded inserts are available for added security
- Convenience of ordering valves and seats from same source as pumps and parts
- Both wing guided and stem guided valves available

Gardner Denver Fluid End Fitment*

CWS 2250 Triplex GWS 2500 Quint Standard 2500 Quint		SGWS 2500 Triplex and SGWS 2500 Quint		SGWS GD-3000 TLS-10	
Cylinder Size	Valve Family	Cylinder Size	Valve Family	Cylinder Size	Valve Family
3.75"	P4	3.75"	P4	4.5"	P5
4.0"	P4	4.0"	P4	5.0"	P5
4.5"	P5	4.5"	P5	5.5"	P6
5.0"	P5	5.0"	P5	6.0"	P6
5.5"	P6	5.5"	P6		
5.75"	P6	6.0"	P6		
6.0"	P6	6.75"	P6		

* Fit most competitor fluid ends as well.

CONNECT WITH US :